



WEATHERCLAD®
Low maintenance shiplap cladding



BAW-20-140-P-A-UK

Euroform

WeatherClad®



WEATHERCLAD®

Low maintenance shiplap cladding

Stock with CONFIDENCE

For over 30 years, Euroform has built a reputation for innovation, expertise and reliability. Our products are renowned for their fire and thermal compliance, and are trusted by professionals in the construction industry to deliver outstanding quality and performance every time.

Contents

- 04 WEATHERCLAD®
- 05 Technical data
- 06 Colour chart
- 08 Fixing
- 11 Cutting
- 12 Fixing profiles
- 15 Installation
- 17 Technical information
- 18 Storage and handling
- 19 Efflorescent Salts
- 20 Contact Us

WEATHERCLAD®

Low Maintenance shiplap cladding

An exceptionally durable, woodgrain-effect, fibre cement plank that will enhance any exterior and manufactured according to BS EN 12467:2012+A2:2018.

Euroform WeatherClad® carries third-party BDA Agrément certification from KIWA, which should be read in conjunction with this document and has been CCPI assessed.



FIRE
CLASSIFIED



WEATHER
RESISTANT

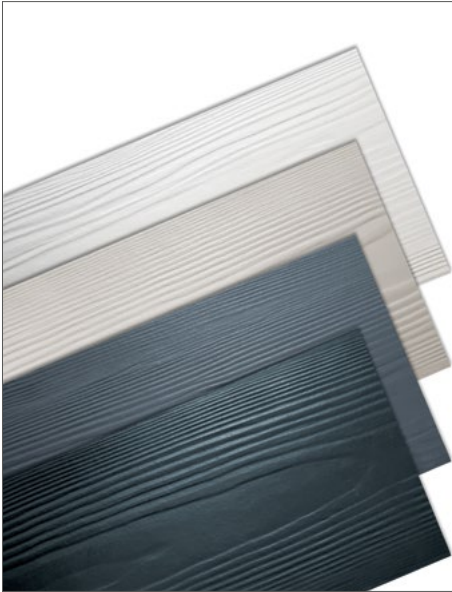


CHOICE OF
COLOURS

Euroform WEATHERCLAD® Highlights

- Larger planks for quicker installation and fewer planks needed
- A2-s1,d0 limited combustibility
- BDA Certified
- Full RAL colour range
- CCPI assessed
- Exterior grade
- Split pallets available
- Comprehensive range of colour-matched profiles and trims available





APPLICATIONS

WeatherClad® is a shiplap cladding system to be applied in the principles of a ventilated rainscreen. WeatherClad® is designed for external applications where durability and performance are required on both commercial and residential buildings.

Supporting framework, which is most commonly timber battens, must have adequate durability for the intended use and comply with applicable regulation.

Do not use WeatherClad® in areas where it may remain in contact with standing water, i.e. within 150mm of DPC level.

Technical data

Product size

3660 x 230 x 7.5mm

Reaction to Fire when factory painted by Euroform

A2- s1,d0

Durability

BS EN 12467 category A, class 2

Service life

Minimum 30 years according to BDA Agrément certification

200 planks per full pallet

(split pallets available)

Type of test	Value
Bending strength	7Nmm ²
Minimum apparent density	Minimum 1340kg/m ³

Dimension Measurement (mm)	Value
Width Tolerance	+0, -2
Length Tolerance	+0, -5
Thickness Range	7.3 - 8.3
Straightness (maximum edge deviation)	4
Squareness (maximum difference in diagonals)	3

STANDARD COLOURS

WeatherClad® is available in a wide range of standard colours plus RAL and NCS colours on request. Bespoke RAL and NCS colours may be subject to minimum order and quantities and on extended lead times.



WC01 White
RAL 9016



WC02 Beige
RAL 1015



WC03 Grey Brown
RAL 1019



WC04 Dark Brown
RAL 8019



WC05 Grey
RAL 7047



WC06 Grey Green
RAL 7009



WC07 Cream White
RAL 9001



WC08 Sand Yellow
S 1510Y



WC10 Blue Grey
RAL 7031



WC14 Atlas Brown
4005 Y50R



WC18 Slate Grey
RAL 7024



WC50 Black
RAL 9017



WC51 Silver Grey
RAL 7035



WC52 Pearl
RAL 7030



WC55 Taupe
RAL 7006



WC57 Sage Green
RAL 7034



WC60 Forest Grey
RAL 7022



WC61 Burnt Red
S 5040 Y80R



WC62 Violet Blue
RAL 7001



Please note:

The printing process restricts the exact representation of colours. For a true colour reference, please request product samples.

Euroform

WeatherClad®



General fixing instructions: Fixing to vertical timber battens

Framing

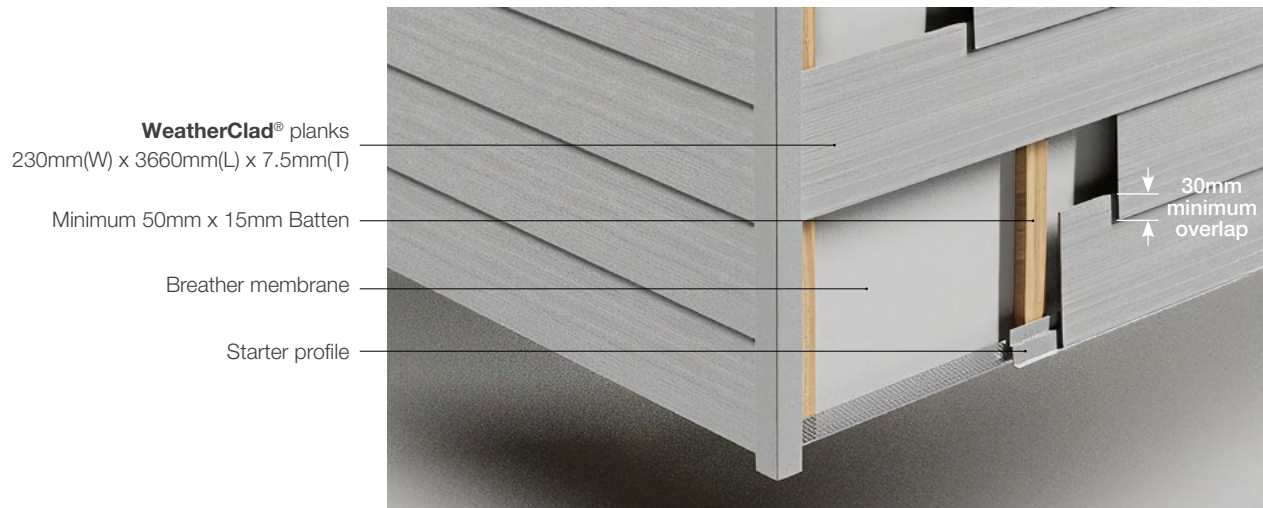
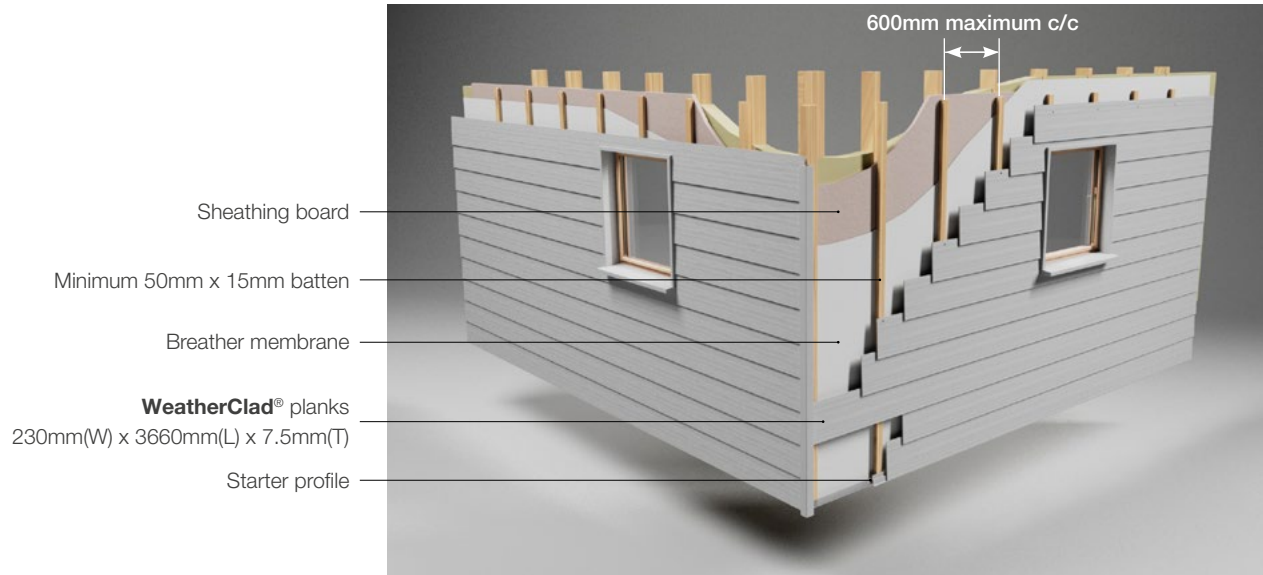
- To install Euroform WeatherClad® boards horizontally, fix timber battens vertically, allowing a minimum 15mm drained and well-ventilated cavity
- Each batten should have a minimum dimension of 15mm deep x 50mm wide
- The space between each batten should be 600mm, measured from the centre of the batten
- Where required, consult a structural engineer to check the support centres for your project
- At joints, the battens must be wide enough to ensure that both plank edges can be fixed sufficiently, considering the minimum plank edge fixing distances

Clearances

- Do not use WeatherClad® in areas where it may remain in contact with standing water, for example, within 150mm of the DPC level
- Maintain a minimum 10mm clearance between WeatherClad® and a hard surface e.g. a roof
- Fixings are generally concealed as planks should overlap by a minimum of 30mm with the plank below. These principles ensure that the system is ventilated to reduce the risk of moisture penetration into the building

Waterproof membrane

A suitable breather membrane should be used when using Weatherclad in a cladding application. The planks should not be relied on to prevent moisture ingress. Euroform recommend Surebreathe® non-combustible membrane when installing WeatherClad®.



WEATHERCLAD®

Screw fixing

Screw fixing is recommended for the most secure fastening of WeatherClad® cladding.

Care must be taken to ensure that the head of the fixing is flush with the surface of the plank and not sunk below the surface or sitting proud.

Fixings for WeatherClad®

Screw fixings

WeatherClad® Screws
Self-drilling, stainless steel, wafer head or countersinking minimum 4.0 x 40mm

No pre-drilling

Fixings no closer than 50mm to plank ends and 20mm to edges

Pre-drilled

Fixings may be placed up to 20mm from plank ends

Nail fastening

Stainless steel grade 304 annular ring nail with dimensions 50 x 2.65mm

Ensure that the plank is flush to the battens before nailing.

Nails should not be closer than 20mm to the top edge of the planks.

Using Nail Gun

When using the pneumatic nail gun, trials should be carried out to ensure that the torque setting fixes the planks flush to the timber studs and does not overfire the nail into the plank, causing rupture.

PROCESSING

01

**Manual cutting
with a handsaw**

Ensure that 'hardened point' saws are selected to maximise the quality of cut and longevity of the saw blade.

All cut edges to be sealed with colour-matched touch-up paint.



02

Power saws

Circular saw is the most popular choice and uses tungsten tips or diamond blades.

Diamond-dusted blade with 36-44 grit.

Recommended blade diameter - 180mm.

Cutting to the back of the plank is recommended for the best finish.

All cut edges to be sealed with colour-matched touch-up paint.



03

Guillotine

A guillotine cutting tool can be used for all square-edge WeatherClad® boards. When using a guillotine cutting tool, the painted face of the board must face upwards.

All cut edges to be sealed with colour-matched touch-up paint.

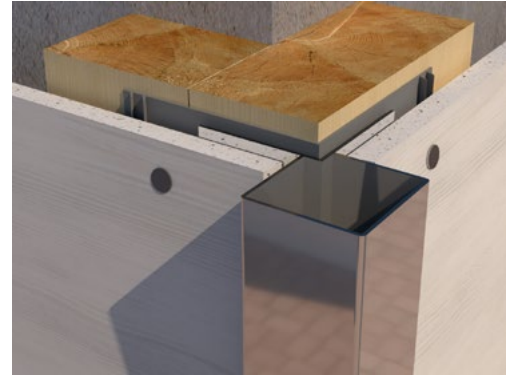
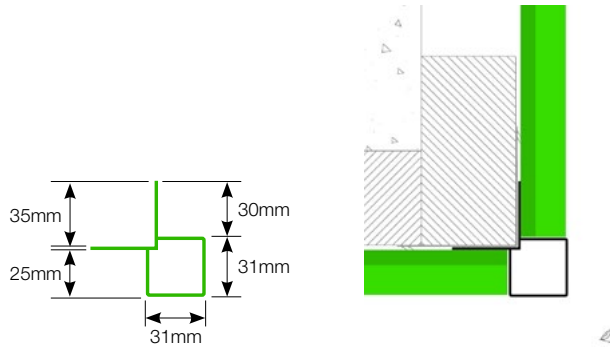


Fixing profiles and applications

Ensuring they are level, position and fix all end, corner and window profiles into place.

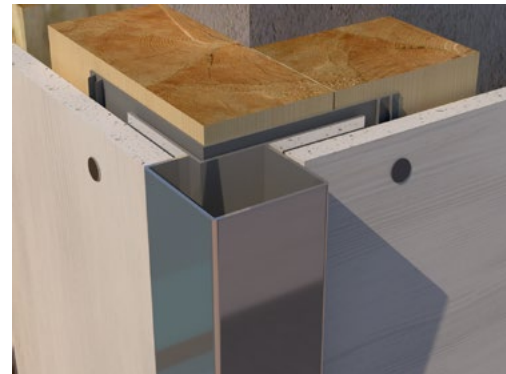
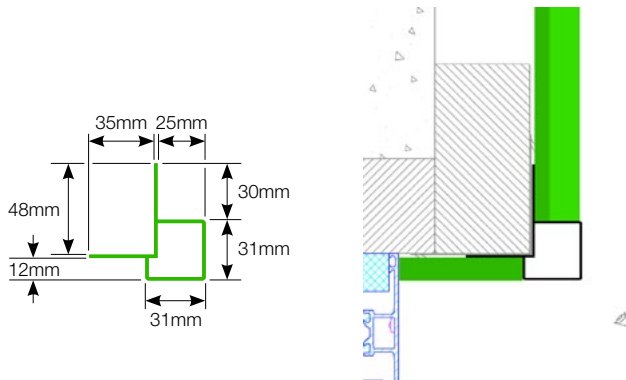
Symmetrical external corner profile

1mm thick. 3000mm lengths.



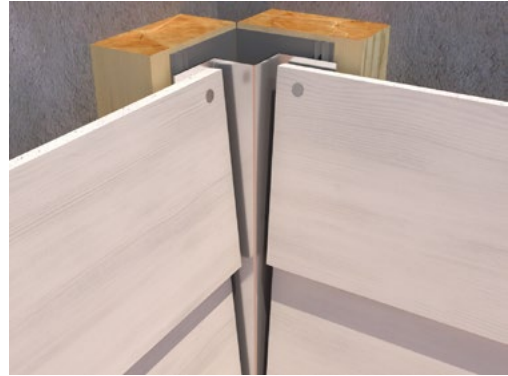
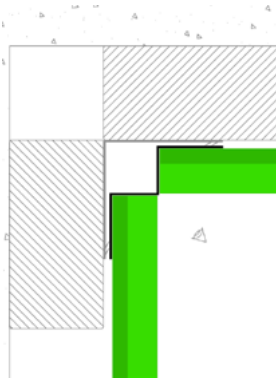
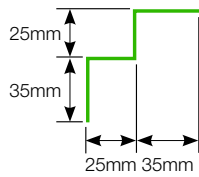
Asymmetrical external corner profile

1mm thick. 3000mm lengths.



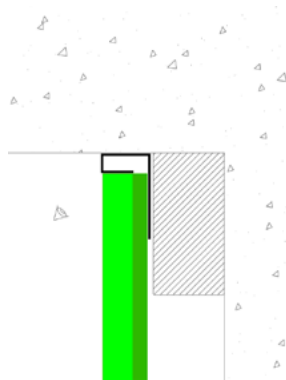
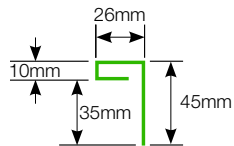
Internal corner profile

1mm thick. 3000mm lengths.



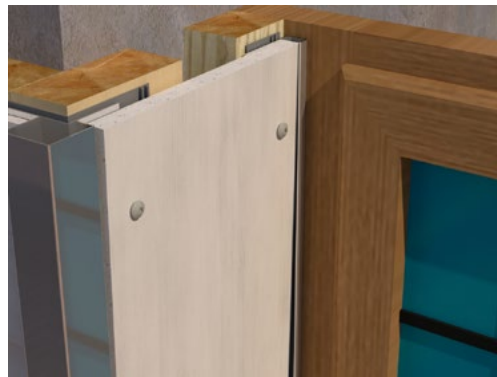
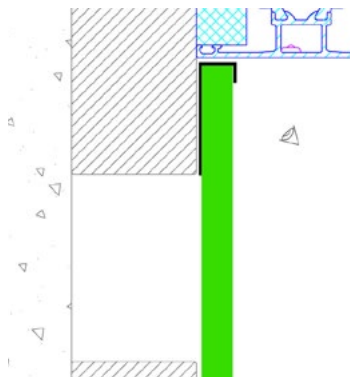
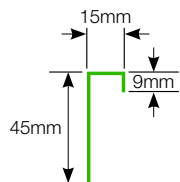
End profile

1mm thick. 3000mm lengths.



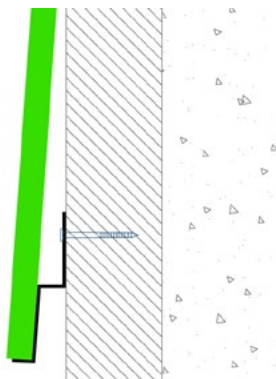
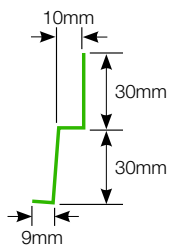
Connection profile at window reveal

1mm thick. 3000mm lengths.



Starter profile

1mm thick. 3000mm lengths.



The key sequence for installation

- Fix the starter profile and perforated vent profile to the base of the vertical battens/rails ensuring both are level.
- Fix end and corner profiles to all openings.
- Place the first plank onto the starter profile. Ensure that the plank is fixed to each batten and the ends of the plank coincide with a batten.
- Place the next plank onto the lower plank with a minimum overlap of 30mm and fix it back to the vertical batten/rail, working up the wall.
- Install subsequent courses of the product as above, with ends staggered.
- At the top of the supporting wall, install a ventilation grille allowing for a 10mm gap.

Jointing information

When two Weatherclad® plank ends meet, an EPDM strip should be applied to the batten to protect the timber from moisture ingress. Planks should be cut square at their ends and loose butt jointed together.



MOISTURE CONTROL

Test	Test Standard	Result
Water vapour resistance factor (u)	BS EN ISO 12572	91
Water diffusion - equivalent air layer thickness (Sd)		0.72m

STRENGTH

Test	Test Standard	Result
Design wind load resistance	ETAG 034 ⁱ	1.33 ⁱⁱ kN/m ²
Pull through resistance of timber fasteners	BS EN 13832	591.3 N (mean) 511.36 ⁱⁱⁱ N (characteristic) 214.97 ^{iv} N (design)
Mean bending strength (wet)	BS EN 12467	12.8 x 10 ³
Mean modulus of elasticity (wet)		5.44 x 10 ⁶
Hard and soft body impact	ISO 7892 and ETAG 034	Use category III and IV

ⁱ Values for solid masonry walls with vertical timber battens of 38mm x 47mm at 600mm centres, and 50 x 2.65 mm grade 304 stainless steel annular ring nails

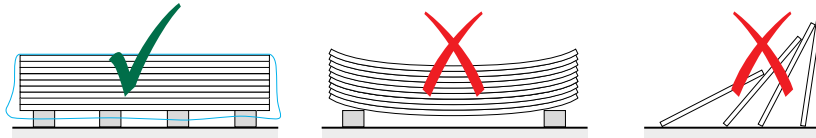
ⁱⁱ Includes partial factor of 1.5

ⁱⁱⁱ Calculated in accordance with BS EN 1990

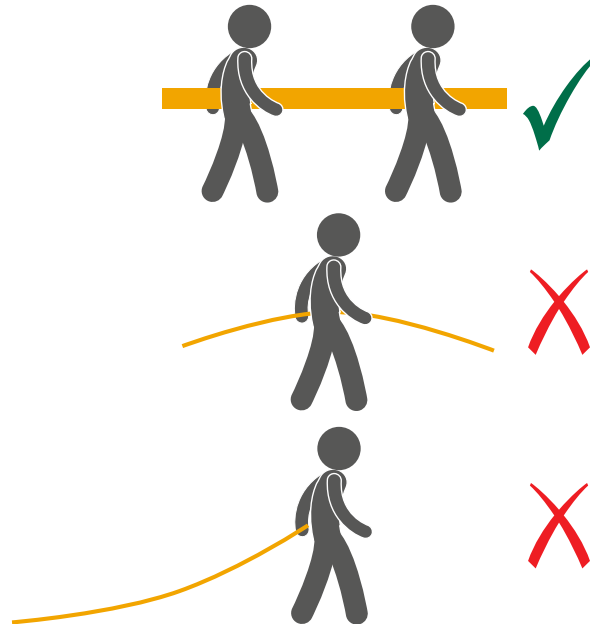
^{iv} Includes partial factor of 2.4

Storage and handling

Each pallet is labelled with instructions regarding the handling and storage of the product. WeatherClad® is supplied in a fully dry state and is weather-protected by plastic sheeting; however, the following precautions are advised once the product is in your care:



- Store WeatherClad® under cover and clear of the ground before use. Do not rely on plastic sheeting in exposed locations.
- When storing overnight, planks should be protected with plastic sheeting or similar, in addition to the product packaging and on flat pallets elevated a minimum of 50 mm from ground level.
- Do not allow the ingress of moisture to the planks before installation, or excess moisture to run down the rear face of the product during installation.
- Boards should be carried vertically on their edges when transported on site to prevent them from bending.
- Care should be taken when removing the planks from their pallets, ensuring that the planks are not dragged, which could cause damage to the decorative paint finish.



Efflorescent Salts

Efflorescence or 'lime bloom' is a naturally occurring, occasional phenomenon that appears as a white, powdery or crystalline salt deposit on cement-based products. This phenomenon is not due to faulty materials, nor does it affect the product's performance.

Outside moisture can pull salt out of the substrate material. This salt-saturated solution travels by capillary action to the rear of the product. Once the water evaporates, a salty deposit is left.

WHY IT HAPPENS

A prime cause for the onset of efflorescence is the retention of water between the WeatherClad® planks when the product was packed or installed in very wet conditions.

RECOMMENDATIONS

It is recommended that WeatherClad® be stored under cover and clear of the ground prior to being used on site. The polythene wrapper should not be relied on for protection in the open. Care should be taken to prevent excessive moisture running down the rear face of the WeatherClad® during installation.

A ventilated cavity behind the WeatherClad® will help to prevent moisture from becoming trapped.

How long does it last?

The duration of efflorescence depends on the quality and type of deposit, and upon prevailing conditions. Efflorescence may resolve itself from a period of rainy and windy weather, as rain, being slightly acidic, can dissolve the deposit and restore WeatherClad® to an even appearance.

Washing with warm water and a soft brush can accelerate its removal; however, care should be taken to avoid damaging the painted surface. More stubborn deposits can be removed with 9.5% acetic acid following the manufacturer's care instructions.



Talk to us today

01925 860 999

sales@euroform.co.uk | euroform.co.uk
Unit 2, Lyncastle Road, Appleton, Warrington, WA4 4SN

- Orders & delivery
- Promotional support
- Sales
- Product advice & support
- Samples
- Training



WeatherClad® is a registered trademark UK00003188165 of SIG Trading Ltd.
WeatherClad® is placed in the UK market under BDA Agrément® certificate BAW 20-140-P-A-UK held by Euroform.
Euroform is a part of the Performance Technology Group.